

MARATHON INTERNATIONAL du Beaujolais

Faites la course en fête !

**23 Nov.
2019**

15^e ÉDITION



MARATHON

MARATHON RELAY

3 OU 4

HALF MARATHON

13 KM DU RHÔNE

FAMILY MARATHON



trèsBeaujolais

Runner's guide



MARATHON DU BEAUJOLAIS



PROGRAM 2019	page 6
HIGHLIGHTS OF THIS EDITION	page 7
START IN COMPLETE SERENITY	page 8
HOW TO GET AROUND VILLEFRANCHE?	page 9
USEFUL !	page 10
LOCALISATION PLAN	page 11
SCHEDULES	page 12
RELAY VEHICLE ITINERARY	page 13
THE WINNERS	page 14
THE RACES	
- <i>The marathon</i>	page 16
- <i>The marathon / Relay</i>	page 18
- <i>The half marathon</i>	page 20
- <i>The 13 km du Rhône</i>	page 22
- <i>The family marathon</i>	page 24
THE PARTNERS OF MARATHON DU BEAUJOLAIS	page 26





Édito

Dear friends runners,

In few days, you will participate to the 15th edition of Marathon International du Beaujolais certified for the first time “international” by the French Athletics federation.

More than 18 000 runners from 5 continents and 63 countries to manifest, for most of you, your faithfulness to our Beaujolais.

Thanks for your choice and your trust.

Our steering committee and the 1 200 volunteers on the event sincerely hope that this week end of race and sport but also a celebration, conviviality and sharing.

So, enjoy without moderation this edition and the few days in our beautiful Beaujolais region.

Kind regards,

For the steering committee



Alain BOUHY
Président des
Beaujolais Runners



L'agglo



This year again, l'Agglo Villefranche Beaujolais Saone is happy to support and participate fully to the Marathon

International du Beaujolais by engaging elected official and the collaborator in the race.

The MIB, its first the promise of a discovery : the Beaujolais and the bright colours of autumn wonderful routes on path and small roads through vineyards, castles and cellars but it also the assurance of tasting Beaujolais at the moment when it's being honoured.

The MIB, it's also the promise of sharing : to the 1 200 volunteers with an overflowing generosity and inexhaustible energy who are working hard to ensure the best reception and a good organization in addition to this, thousand of spectators, residents, relatives, tourists, family caring and generous in encouragement along the way.

The MIB, it's finally, for the runners, the promise of a winning combination : performance and sportsmanship, with the pleasure of the eyes, the tast buds and the celebration.

Come and discover the Beaujolais in all it's beauty and warm welcome.

Daniel FAURITE

Président de l'Agglo Villefranche Beaujolais Saône.



La CCI



The Marathon International du Beaujolais contribute to the influence and the promotion for our wonderful

region.

This reference event is colours Très Beaujolais offer to the participants the opportunity to discover the area and live the conviviality of Beaujolais.

It's also because Sport and company have multiple commons values that our chamber of Trade and Industry, partners of the marathon and also co - organizer of the inter-company challenge.

Good race and great challenge in Beaujolais.

Jean-Baptiste MAISONNEUVE
Président de la CCI



Le département



Since all these years, the collaboration between the departemental community and The marathon International du Beaujolais has continued

to improve. This sharing approach compose the DNA of the marathon support with passion and professionalism by the organization and volunteers united under the same banner.

This 15th edition of The Marathon International du Beaujolais is once again an essential sportive and festive event in the Rhone region.

All organizers and volunteers will allow this year again to offer runners the best technical conditions to excel in sports while enjoying a great moment of conviviality and a unique setting and sublime landscapes.

The Marathon International du Beaujolais remains a unique race. Last year, more than 17 000 runners have been registered witch testifies vitality and enthusiasm, this appointment is always in a good mood.

I would like to thank all those who have made this event a success and I would like to express my encouragement to all the participants who will be on the starting line the Saturday 23th November.

Good race to everyone

Christophe GUILLOTEAU
Président du Département du Rhône



L'Interprofession du Beaujolais



Beaujolais. Partners since the first strides of this big event, we have always believed in its immense potential.

The history of the marathon is linked to the wine of our region: this date occurs during the week of Beaujolais Nouveaux. Its route crosses our cellar, our vines and its runners have the opportunity to taste the bottles. We don't see it any other way. The Marathon International du Beaujolais reflects the value conveyed by our vinicultural stakeholders and primeur wines: the conviviality, the sharing and creation of memorable moment.

Already the 14th edition but the Marathon reinvents itself every year to attract more and more runners and to make them discover the charm of Beaujolais. From the 4 corners of the world, the runners have the opportunity to see our wines landscapes, to sleep in the winegrowers' gites, to visit our castles, and appreciate our wines by immersing yourself in the regional culture.

A real opportunity for the wine tourism. More than a simple collaboration, The Marathon International du Beaujolais is becoming over the years a tradition to consume without moderation.

Dominique PIRON
Président Inter Beaujolais



L'Interprofession du Beaujolais



Come to celebrate the Marathon!

The 15th edition du Marathon International du Beaujolais

will be as usual the festive races to not forget. With 5 races organized by the Beaujolais Runners whose 3 with a start in Villefranche with more than 17 000 runners with a route in the heat of our region before being fervently encouraged along our famous national street.

All runners will be pleased to meet again the wonderful landscapes between vines and valleys, route and greens in the heart of the territory emotionally charged. The costumes and a good mood will be honoured like our champions, for all over the world who will appreciate the festive mood.

The new route selected this year will take the participant across 12 vineyard village with the colour red and yellow form the autumn.

Thomas RAVIER

Maire de Villefranche
Vice-Président du Département



La région



Alongside Stéphanie Pernod Beaudon, deputy Vice President Sports, I'm proud that the region supports the

marathon which has become over the years an inescapable event national and international in scope.

The marathon diffuses simple value and essential like the generosity a sense of effort. As well it character is the opportunity to discover the wealth and diversity of Beaujolais.

Finally, I salute the action and awesome dedication of the organizers who make it possible to hold this magnificent sports festival.

Laurent WAUQUIEZ
Président de La Région



Program 2019

3 DAYS OF SPORT
ET PARTY!



Thursday 21th november

12pm - 8pm
ParcExpo Villefranche
Marathon Village
& withdrawal of bibs

Fri 22th november

10pm - 8pm
ParcExpo Villefranche
Marathon Village
& withdrawal of bibs

6 pm
Official opening of the
Marathon

Sat 23th novembrer

From 6:30am - 7:15am
ParcExpo Villefranche
Departure of shuttles to
Fleurie (marathon & relay
3/4)

From 9 am - 8 pm
Villefranche
Rotation of shuttles from
the relay parkings to the
station of Villefranche



**Gift pick-
up
ONLY**

At Parc Expo in the
same time as your
bib





Highlights of this edition

ANIMATIONS & MEALS



Fri. 22th november
7 pm to 11 pm

PASTA PARTY
Parc Expo



Sat. 23th november
From 6:30 pm

**TAPPING
PYROTECHNIC SHOW
ET FIREWORKS**
Front of City Hall



Sat. 23th november
From 8 pm

**LA NUIT DU
MARATHON**
Parc Expo



Sun. 24th november
From
10am to 2 pm

**VISIT OF WINE
HAMLET WITH
TASTING AND LUNCH**
Le Hameau du Vin
route de la Gare
Romanèche-Thorins



Départures

MARATHON

Sat. 23th from 9am
Fleurie
Distance : 42,195 km

MARATHON RELAY 3

Sat. 23th from 9:20 am
Fleurie
• R1
Fleurie > Cercié : 16 km
• R2
Cercié > Arnas : 14 km
• R3
Arnas > Arrival : 12 km

MARATHON RELAY 4

Sat. 23th from 9:20 am
Fleurie
• R1
Fleurie > Cercié : 16km
• R2
Cercié > Charentay : 5 km
• R3
Charentay > Arnas : 9 km
• R4
Arnas > Arrival : 12 km



Arrivals

MARATHON

Sat. 23th from 11:25 am to
4 pm

MARATHON RELAY 3

Sat. 23th from 11:40 am to
4 pm

MARATHON RELAY 4

Sat. 23th from 11:35 am to
4 pm

HALF MARATHON

Sat. 23 th from 1h05 pm
to 4 pm

13 KM DU RHONE

Sat. 23 th from 11:25am to
4:30 pm

LA FAMILY MARATHON

Sat. 23th from 10:15am to
11 am – Villefranche
Distance : 2.5 or 5 km

COURSE CLOSURE (all formulas)

4h30 pm
Course closure

AWARD CEREMONY (all formulas)

3:30 pm



Start in complete serenity

Thursday 21th november

12pm - 8pm
ParcExpo Villefranche
Marathon Village
& withdrawal of bibs

Fri. 22th november

10pm - 8pm
ParcExpo Villefranche
Marathon Village
& withdrawal of bibs
6 pm
Official opening of the
Marathon

Sat. 23th novembrer

From 6:30am – 7:15am
ParcExpo Villefranche
Departure of shuttles to
Fleurie (marathon & relay
3/4)

From 9 am – 8 pm
Villefranche
Rotation of shuttles from
the relay parkings to the
station of Villefranche

HOW TO PICK-UP YOUR BIB ?

the pick-up of your bib all
formulas is only made :

Parc des Expositions
221 Avenue de l'Europe,
69400 Villefranche-sur-
Saône

- Thursday, 21th. from
12pm à 8pm
- Friday 22th nov. from
10am à 8pm (last deadline)

NO REMOVAL AT FLEURIE

HOW TO GET AROUND THE PARC DES EXPOSITIONS ?

Parc des Expositions
221 Avenue de l'Europe,
69400 Villefranche-sur-
Saône

**Free parking and relay
deserted by shuttles on
saturday**

From Villefranche center
: direction highway toll
A6 Paris. Take the left toll
roundabout. Straightaway
at the next roundabout,
The Parc des expositions is
on your left.
Entrance rue de l'industrie.

HOW TO GET : Villefranche/Saône

Au parc des Expositions

Free parking and relay
deserted by shuttles on
saturday

Au. Saint Exupéry
Bd Jean Jaurès / Hôtel de Ville

Fleurie / Mairie

Marathon et Relay 3/4

By shuttle :

6:30am to 7:15 am

Departures of shuttles at
parc des expositions

CAUTION !

No bus return from Fleurie

ROMANECHÉ-THORINS

Wine hamlet
Duboeuf

RUNNER BAG DEPOSIT

• Do not forget to affix
your bag label with your
bib.

MARATHON

- Bag deposit :
- Gym at Fleurie
- bag recovery :
- basement of the covered
market

HALF-MARATHON et 13 KM du RHONE

- Deposit and recovery
bags : Mongré school

CAUTION :

- Prohibited object inside
the bag : no bottles / no
aérosols spray / no blunt
object

How to get around villefranche ?

FREE SHUTTLES

Shuttles bus from parkings relay to Villefranche station from 9 am to 8 pm (every 10 minutes)

Marathon et relay 3/4 : park on the P0 à Parc Expo or near (parking P0 bis).

Half-marathon et runners of 13 km : parking relay P1, P2, P3, P4, P5 near the exit of d'autoroute sud



DÉPARTS
des courses Semi
& 13 km du Rhône

ARRIVÉE

SNCF

PARC EXPO

DÉPART
BUS-COUREURS
MARATHON
Fleure

P 0
SIB

P 5

P 3

P 4

P 2

P 1

JASSANS-RIOTIER

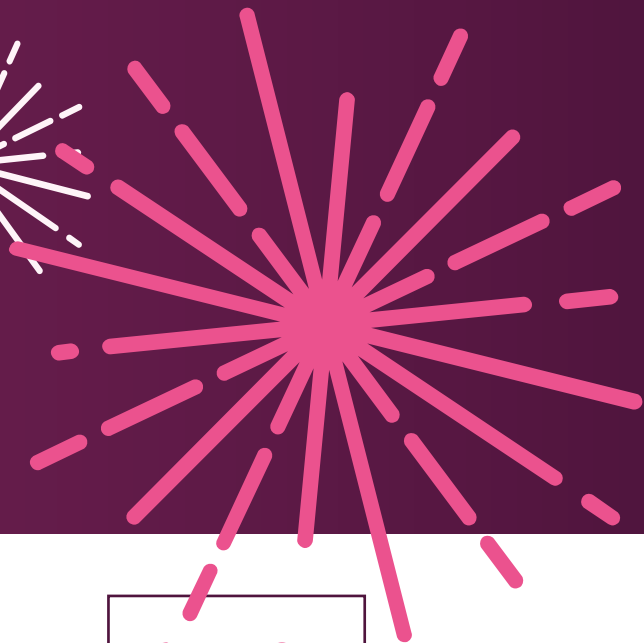
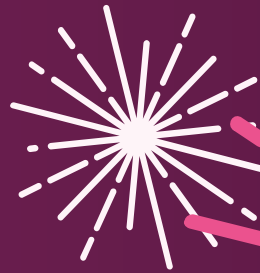
VILLEFRANCHE-SUR-SAÔNE

AUTOROUTE A6

Vers Fleure



Useful !



TIMING

For the solo runners

Your electronic chip is glued on your bib . Be careful not to blend or damage it

It is that will allow you to be detected at the start, each intermediate point and classified at the finish. These chips are disposable, you don't need to return them

For the relay

The electronic chip is attached to a bracelet that each torchbearer must transmit to his teammate during each relay

CAUTION !

No bracelet with electronic chip, no ranking, no certificate !

Only relay bracelet have to be return at the team organization or within a week at :

**Yaka Chrono
32 rue de Lyon
71000 Macon**

or at the timing point in case of abandonment. Wristbands not returned will be charged 15 €.



TO BE IN THE RACING

Please respect the schedule and the order of departure : electronic recording on the starting line . Several intermediate controls are installed on the course allowing you fans to follow you on :
yaka-events.com



TIME RESTRICTIONS

MARATHON / RELAY :

12:30 pm
Charentay centre – KM21.1
2 pm
Arnas Ecole – KM30.1
4 pm
Arrival

HALF-MARATHON :

2:30 pm
Chateau de Talancé – KM13.2
4 pm
Arrival

13 KM DU RHÔNE :

2:45 pm
Chateau de la Vénerie – KM7.3
4:40 pm
Arrival

FAMILY MARATHON :

From 10am to 11am

Late participants will be put out of order and repatriated by shuttle at Villefranche.

The + of the event

BEFORE RACE

For the marathon's runners from 8 am , Km-1 , andouillettes gratin

RACE:

For the relay, half and 13 km
Site de Mongré - (via Bd Gambetta) :

- opening from 10 am
- Bag deposit
- Refuelling at the end
- Welcome coffee



AFTER COURSE

Marathon

- Covered market : refuelling
- Swimming pool St Exupéry : changing room & showers

Relay / Half-Marathon / 13 km

- At Mongré : Refuelling

From 1pm to 6:30 pm, all the marathon's runners can go to the swimming pool Saint-Exupéry for free with a presentation of bib.



DÉPARTS

des courses Semi & 13 km du Rhône



Ravito Marathon Relais, Semi & 13 km
Dépôt & retrait sacs
Semi & 13 km



MONGRÉ
Piscine Saint-Éxupéry

avenue Saint Exupéry → à 500m

Marathoniens uniquement
accès par la rue F. Perrut

rue Francisque Perrut →

rue Philippe Héron

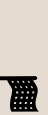
rue de Thizy



Retrait des sacs/ Vestiaire
Pôle Santé & Ravito
MARATHON UNIQUEMENT

Coureur Semi et 13 km
accès par avenue St-Exupéry

ARRIVÉE



MARCHÉ
COUVERT



PARTENAIRES
VILLAGE

Bd Jean Jaurès

Bd Gambette

Départ
Family
Marathon

PC
sécurité
organisation

HÔTEL
DE VILLE



Accueil
bénévoles
Buvette



VILLAGE
FAMILY
MARATHON



Mise
en perce
des prix

Remise
des prix

Rue de la Paix

rue de la République

rue de la Sous-Prefecture

Place
des Arts

rue Corlin

rue Nationale

rue Nationale

rue Victor Hugo

rue Grenette

rue Boiron

rue Paul Bert

Itinéraire piéton

Retour PARCEXPO piétons

Cheminement piéton OBLIGATOIRE
pour aller aux départs SEMI et 13 KM DU RHÔNE

Parcours
vers l'arrivée

Itinéraire piéton

Retour PARCEXPO piétons
2 km par route de Frans



PC secouristes



Ravito

Pour les dossards reçus
par la voie postale



(1) Cadeau coureur Relais / Semi / 13 km
(2) Cadeau coureur Marathon

Bd Louis Blanc

rue Dunant

rue René Cassin

Vers
Route
de Frans



GARE

Navettes
Villefranche/
Saône

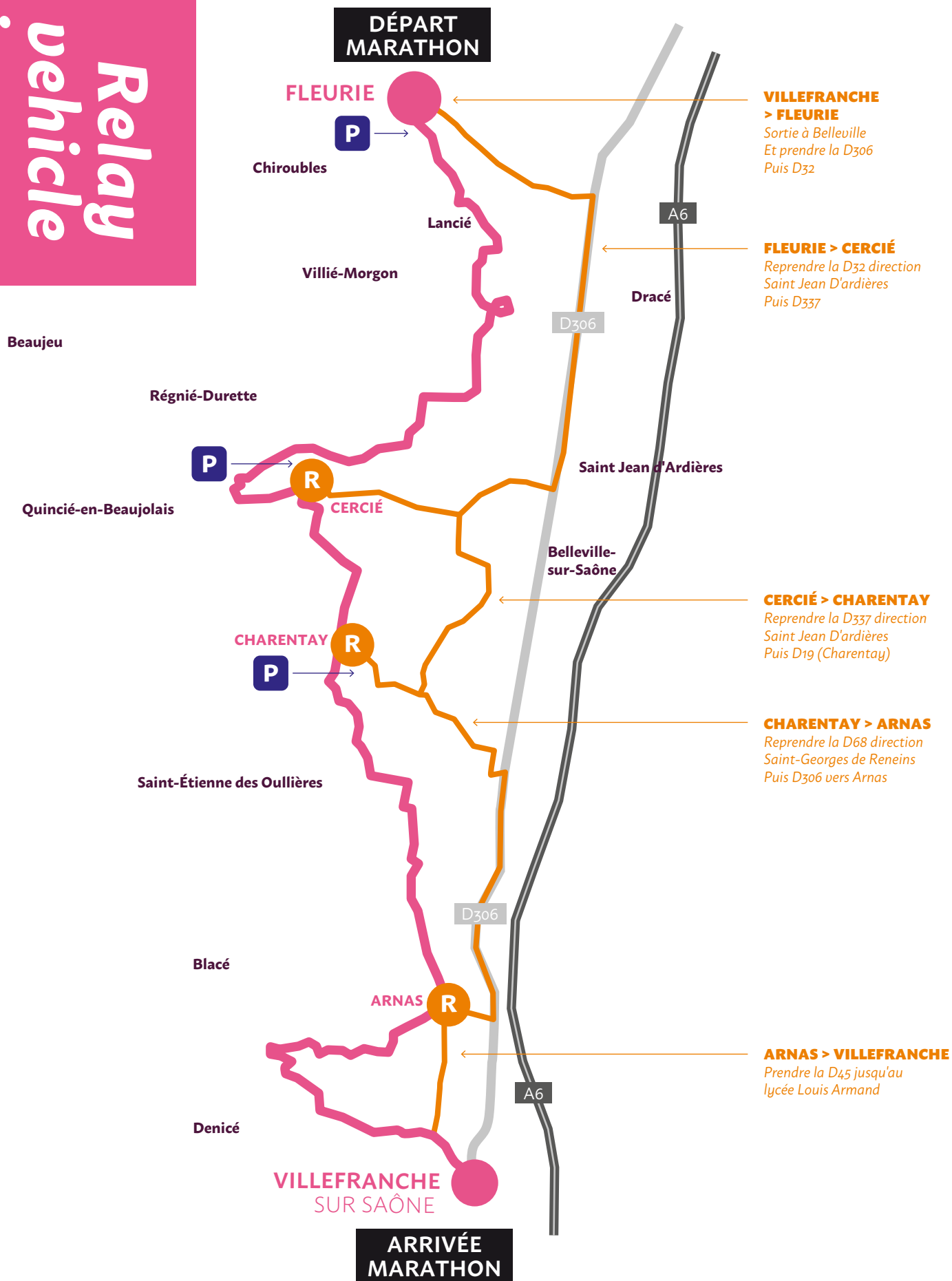
Localisation plan



Programme

HEURE	PROGRAMME	LIEU
Jeudi		
12h00 - 20h00	Ouverture du Village exposants et retrait des dossards toutes courses	Parc Expo Villefranche
Vendredi		
10h00 - 20h00	Village exposants et retrait des dossards toutes courses	Parc Expo Villefranche
18h00	Pasta Party	
18h30	Conférence de presse et présentation du programme	
Samedi		
DÉPARTS DES COURSES		
9h00	Départ du Marathon	Fleurie
9h20	Départ des relais	Fleurie
12h00	Départ du Semi-Marathon	Avenue St Exupéry - Villefranche
14h30	Départ de la 13 km du Rhône	Avenue St Exupéry - Villefranche
ARRIVÉES DES COURSES		
11h25 - 16h00	Marathon	Boulevard Jean Jaurès - Villefranche
11h35 - 16h00	Marathon relais	
13h05 - 16h00	Semi Marathon	
15h00 - 16h30	13 km du Rhône	
Fermeture des parcours à 16h30		
6h30 - 7h15	Départs bus coureurs pour Fleurie	Départ de Parc Expo Villefranche
9h30 - 20h00	Navettes des parkings pour accès centre ville depuis tous les parkings externes signalés vers gare de Villefranche	
10h00	Départ de la Family Marathon	Villefranche
À partir de 13h	Podium Scratches	Ligne d'arrivée
À partir de 15h15	Podiums	Parvis de l'hôtel de ville - Villefranche
13h - 18h30	Vestiaires et douches pour les coureurs	Piscine St Exupéry
18h30	Mise en perce	Parvis de l'hôtel de ville - Villefranche
20h00	Nuit du Marathon	Parc Expo, rue de l'industrie - Villefranche
Dimanche		
10h - 14h	Visite découverte du Hameau du Vin avec dégustation et déjeuner	Le Hameau du vin - route de la gare Romanèche Thorins

Relay vehicle itinerary





THE WINNERS

*of Marathon International du Beaujolais
since 2006*

MEN'S WINNERS

WOMEN'S WINNERS

2018	Sébastien SPEHLER	2:24:41 (Re)	Maria BEREZHNYAYA	2:50:40 (Re)
2017	Pierre BARBET	2:35:31	Aurélia TRUEL	3:03:32
2016	Cédric FLEURETON	2:29:40	Magali FLECHE	3:07:19
2015	Cédric FLEURETON	2:33:27	Immaculate CHEMUTAI (OUG)	3:20:38
2014	Frédéric RUBERTI	2:38:54	Sandrine MONIER	3:06:33
2013	Yves PALANDRE	2:33:13	Immaculate CHEMUTAI (OUG)	2:59:43
2012	Patrice LOMPO (BEN)	2:29:48	Sandrine MOTTO ROSS	3:09:07
2011	Éric MAZIMPAKA (RWA)	2:42:51	Diana DIMITROVA (BUL)	3:17:06
2010	Denis BADEL	2:39:16	Sandrine MOTTO ROSS	3:07:32
2009	Frédéric DESPLANQUES	2:28:35	Stéphanie PONTUS	3:13:10
2008	Jean-Franck PROIETTO	2:37:10	Michelle LESERVOISIER	3:14:48
2007	Cyril MULOT	2:38:34	Catherine RAVIER	3:08:37
2006	Nyabenda PASTEUR	2:27:54	Christiane LACOMBE	3:08:30

(Re) : record de l'épreuve

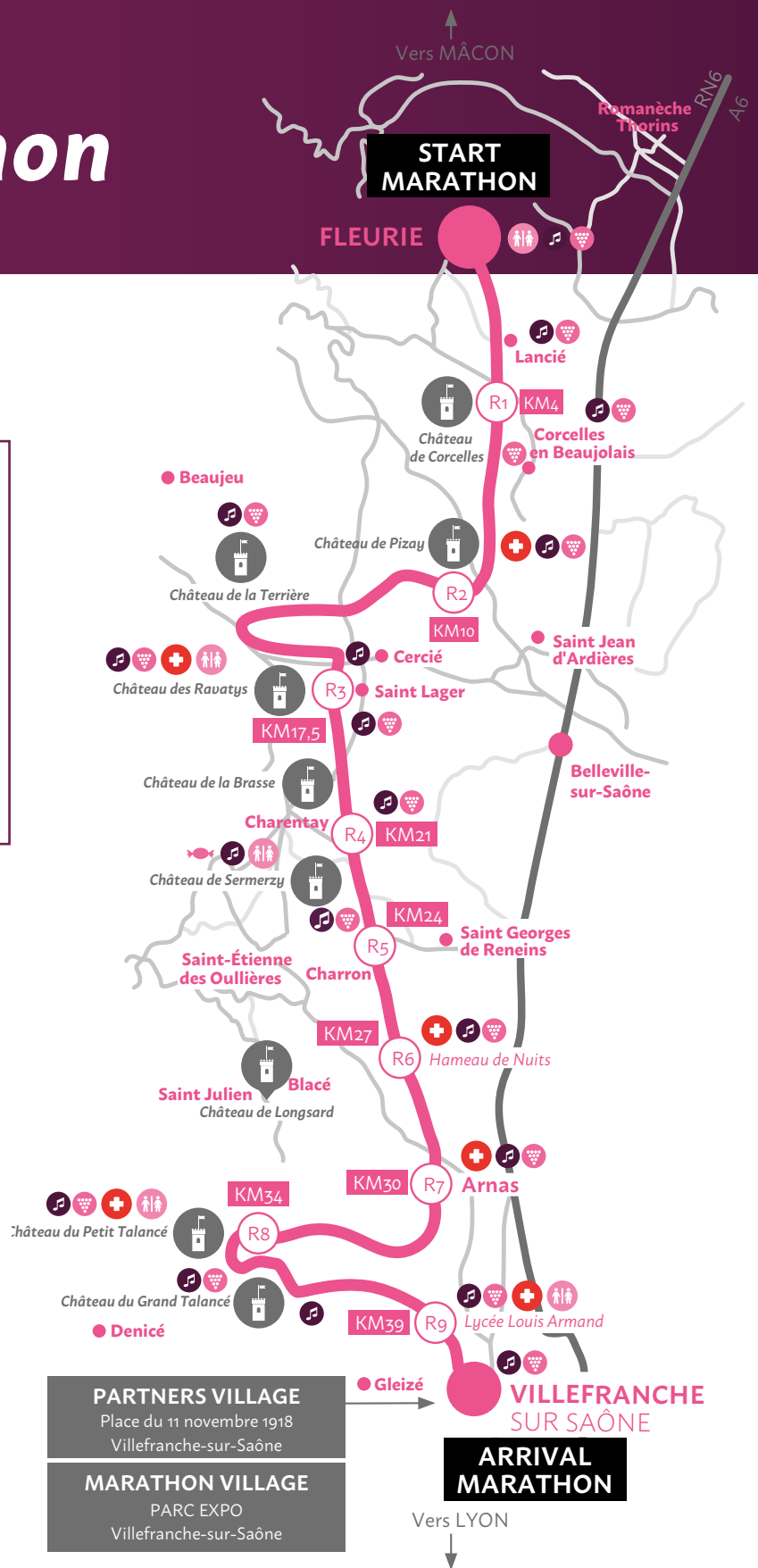


The marathon



- **95% of the course** is done on small Beaujolais roads, the rest concerns passages around castles and on vineyard paths (charrois).
- **A course labelled FFA** between wines and castles (Corcelles, Pizay, Ravatys...).
- **More than 12 villages** crossed.
- **15 tastings including 9 refreshments** sports et festive.
- **A shuttle to go to the departure to Fleurie** from Parc Expo (runs from 6:30 am to 7:15 am).
- **Start from Fleurie at 9 am** (disguise recommended).

- Marathon
- R1 Refreshment
- 🎵 Animation
- 🍷 Wine tasting and/or snack
- 🏰 Castle
- Villages crossed
- 🚻 Toilets
- 🏥 First aid station



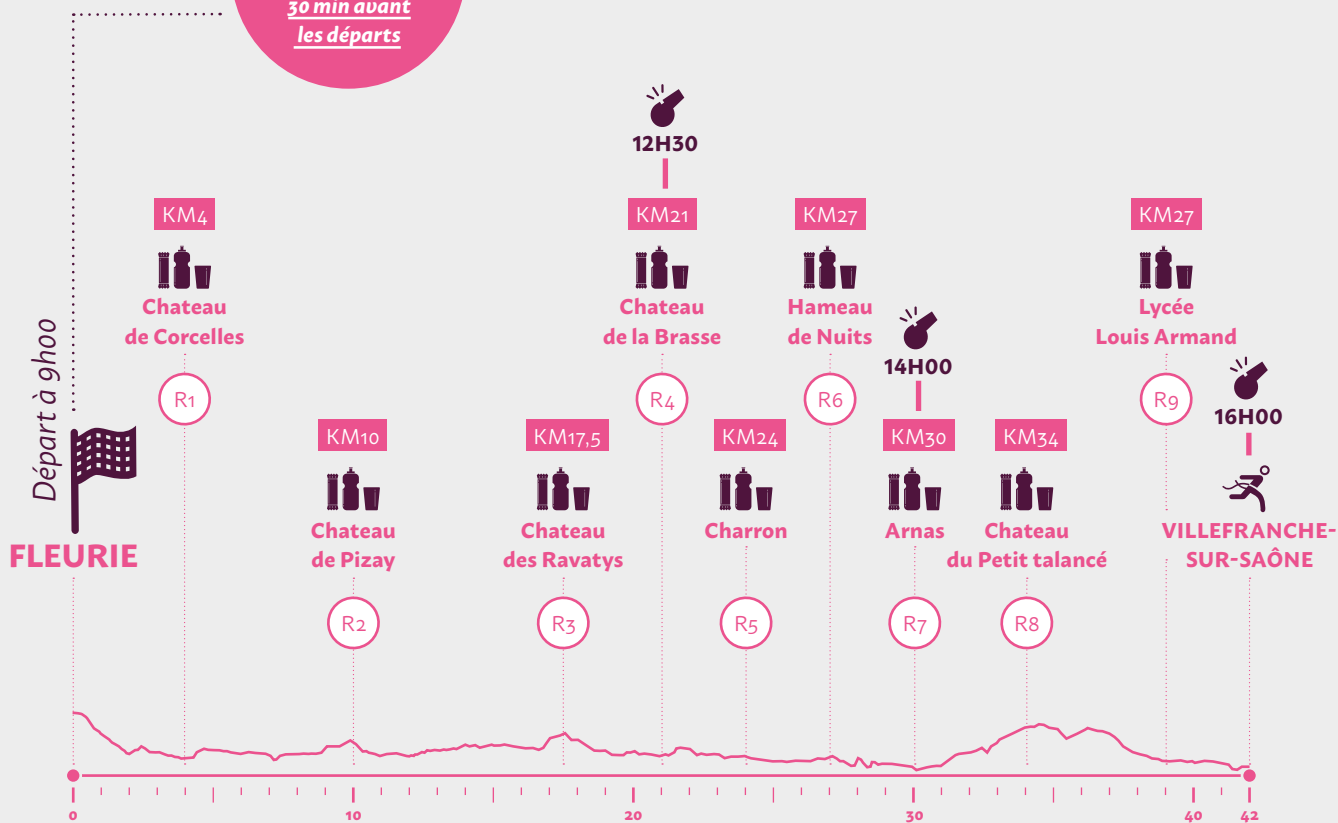
PARTNERS VILLAGE
Place du 11 novembre 1918
Villefranche-sur-Saône

MARATHON VILLAGE
PARC EXPO
Villefranche-sur-Saône



SAS!

Entrée dans les SAS
30 min avant
les départs



- Marquage kilométrique : rose / Fléchage au sol de couleur rose fluo
- Respecter le code de la route : les routes sont ouvertes à la circulation
- Ravitaillements tous les 5 km (solide et liquide) et dégustations œnologiques (à consommer avec modération, interdites aux mineurs)
- Barrières horaires Ravito

The marathon / relay

- **95% of the course** is done on small Beaujolais roads, the rest concerns passages around castles and on vineyard paths (charrois).
- **A course labelled FFA** between wines and castles (Corcelles, Pizay, Ravatys...).
- **More than 12 villages** crossed.
- **15 tastings including 9 refreshments** sports et festive.
- **A shuttle to go to the departure to Fleurie** from Parc Expo (runs from 6:30 am to 7:15 am).
- **Start from Fleurie à 9 am** (disguise recommended).

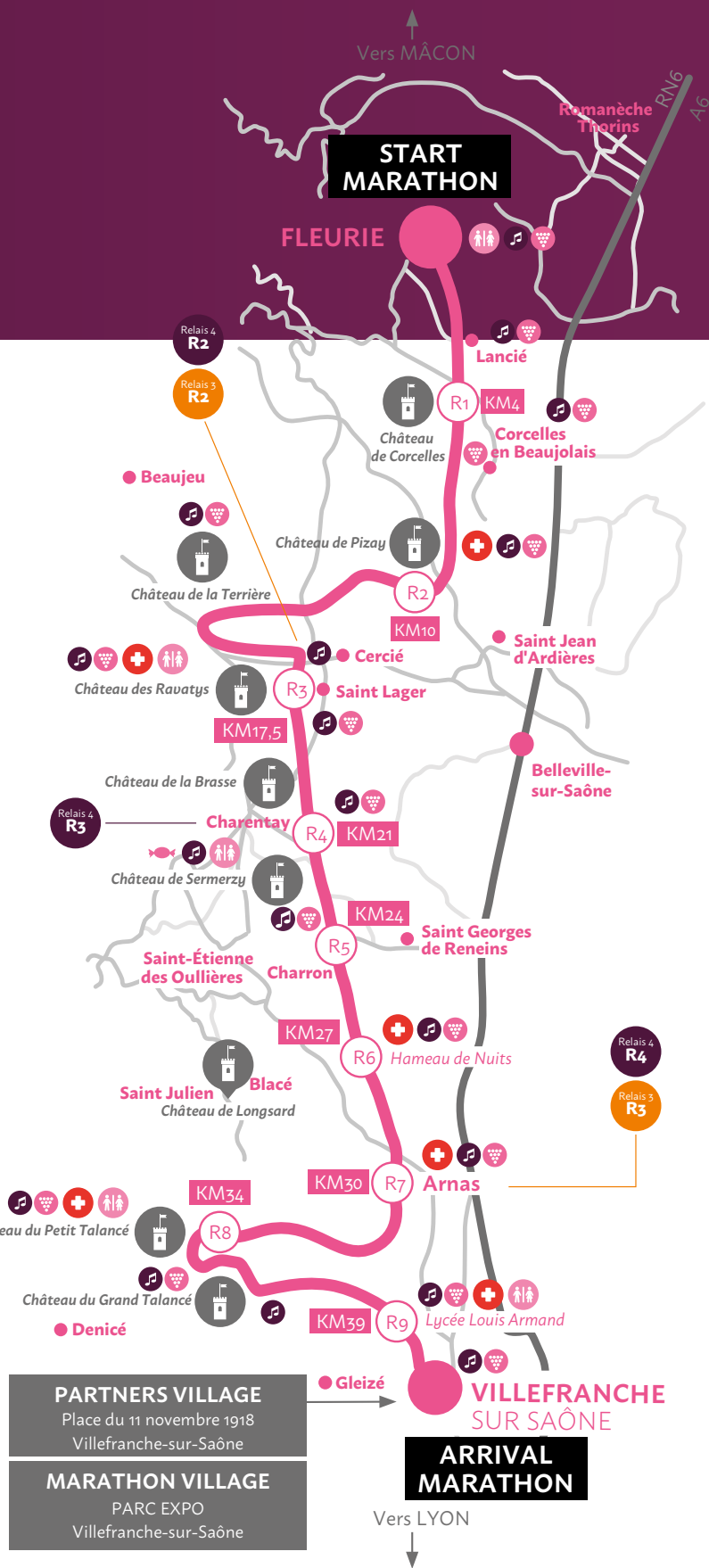
Relais 3

- R1** • Fleurie → Cercié : 16km
- R2** • Cercié → Arnas : 14km
- R3** • Arnas → Arrivée : 12km

Relais 4

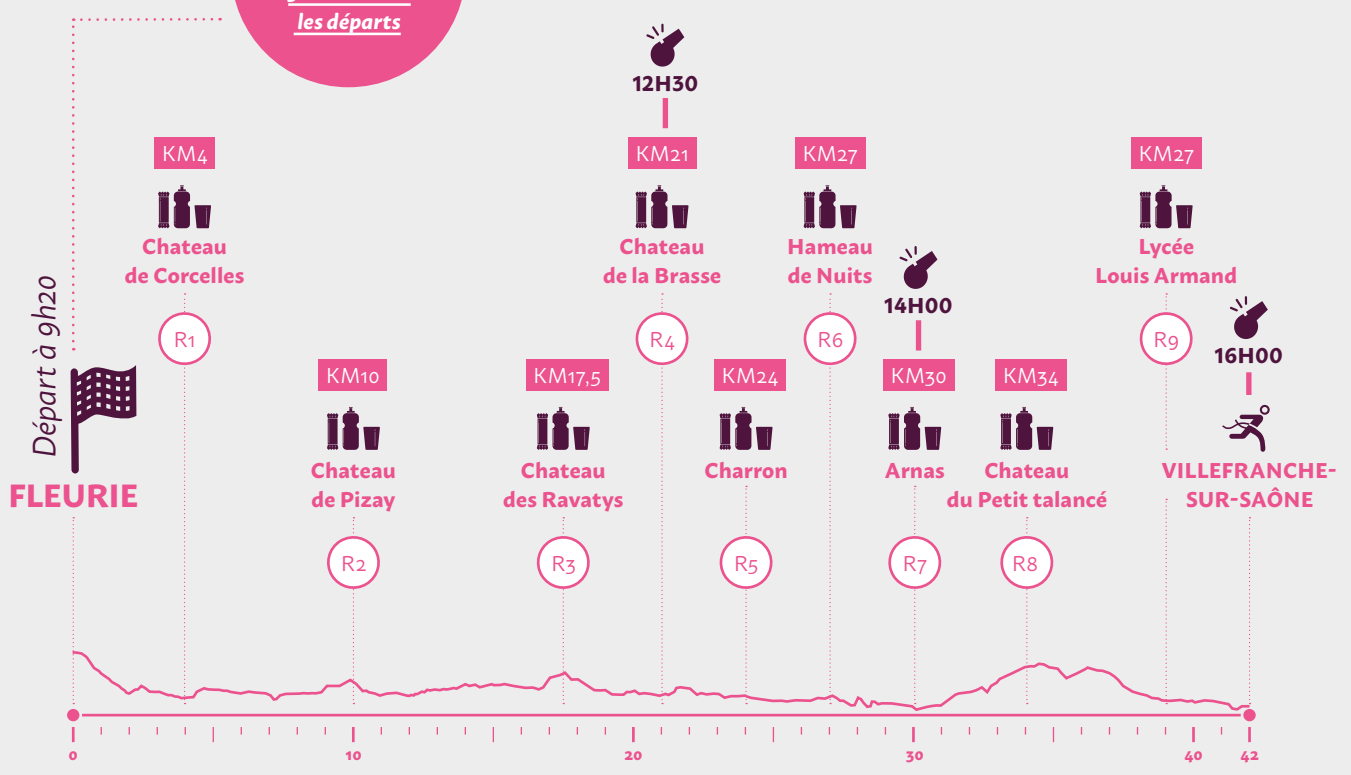
- R1** • Fleurie → Cercié : 16km
- R2** • Cercié → Charentay : 5km
- R3** • Charentay → Arnas : 9km
- R4** • Arnas → Arrivée : 12km

- Marathon
- (R1) Refreshment
- 🎵 Animation
- 🍷 Wine tasting and/or snack
- 🏰 Castle
- Villages crossed
- 🚻 Toilets
- 🏥 First aid station
- Relais 4 R2 Relay
- Relais 3 R2

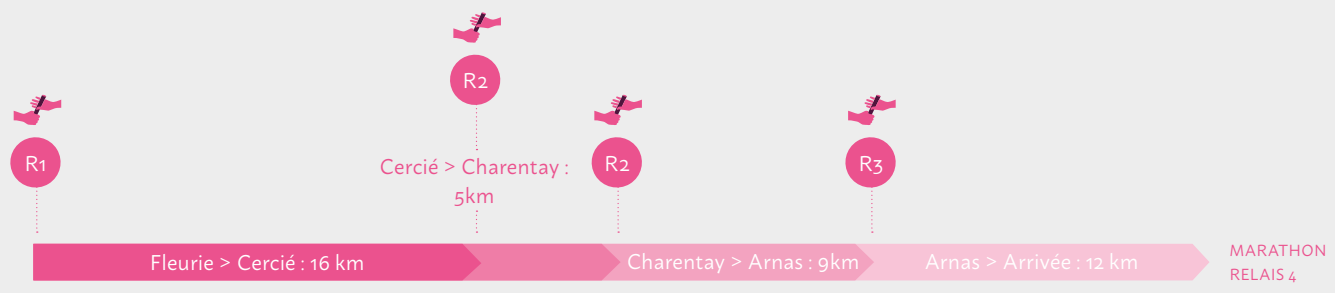
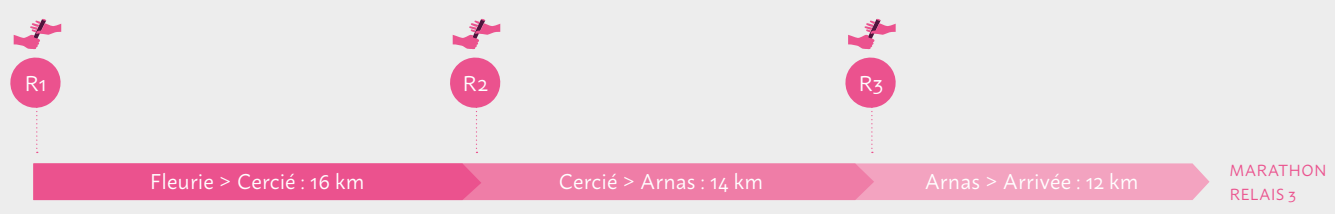




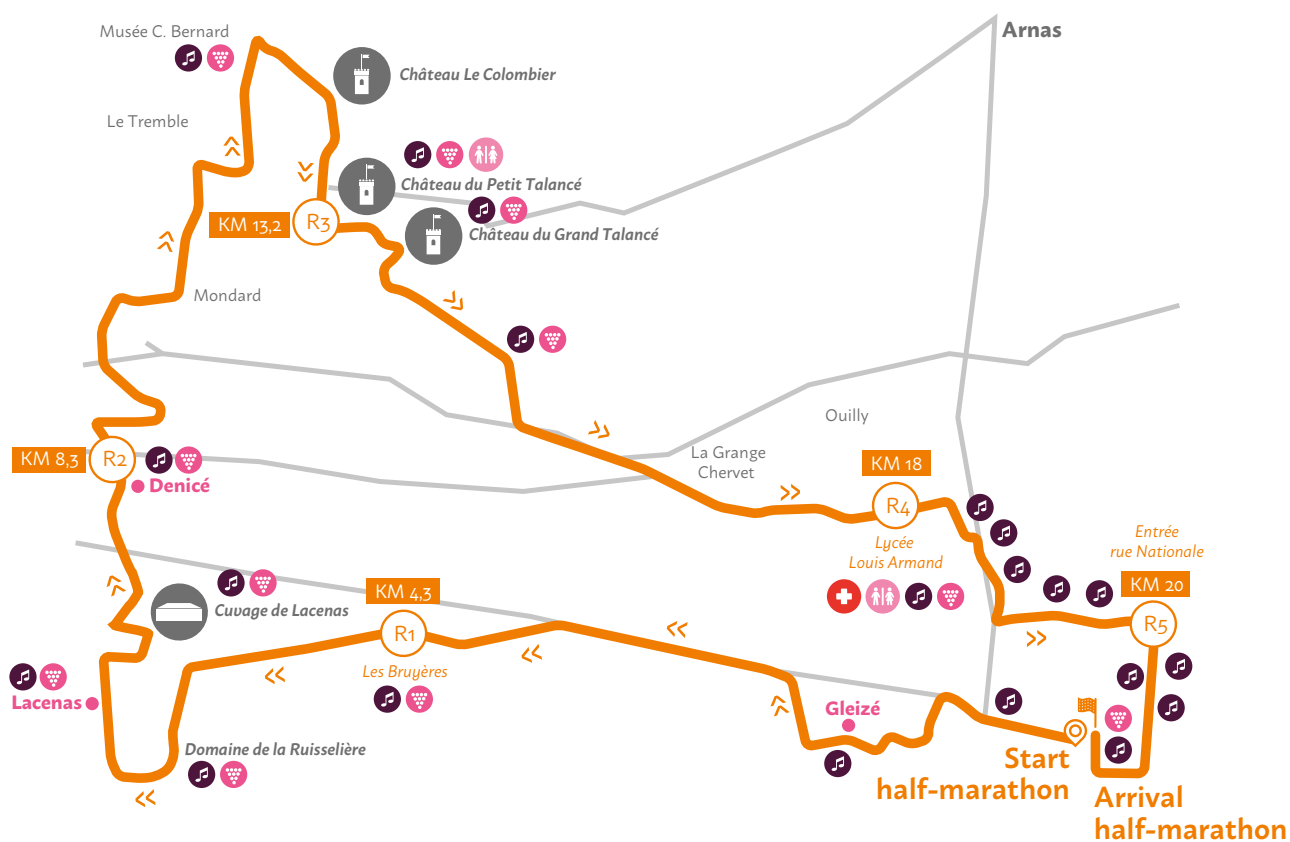
SAS!
 Entrée dans les SAS
 30 min avant
 les départs



- Marquage kilométrique : rose / Fléchage au sol de couleur rose fluo
- Respecter le code de la route : les routes sont ouvertes à la circulation
- Ravitaillements tous les 5 km (solide et liquide) et dégustations œnologiques (à consommer avec modération, interdites aux mineurs)
- Barrières horaires Ravito



The half marathon

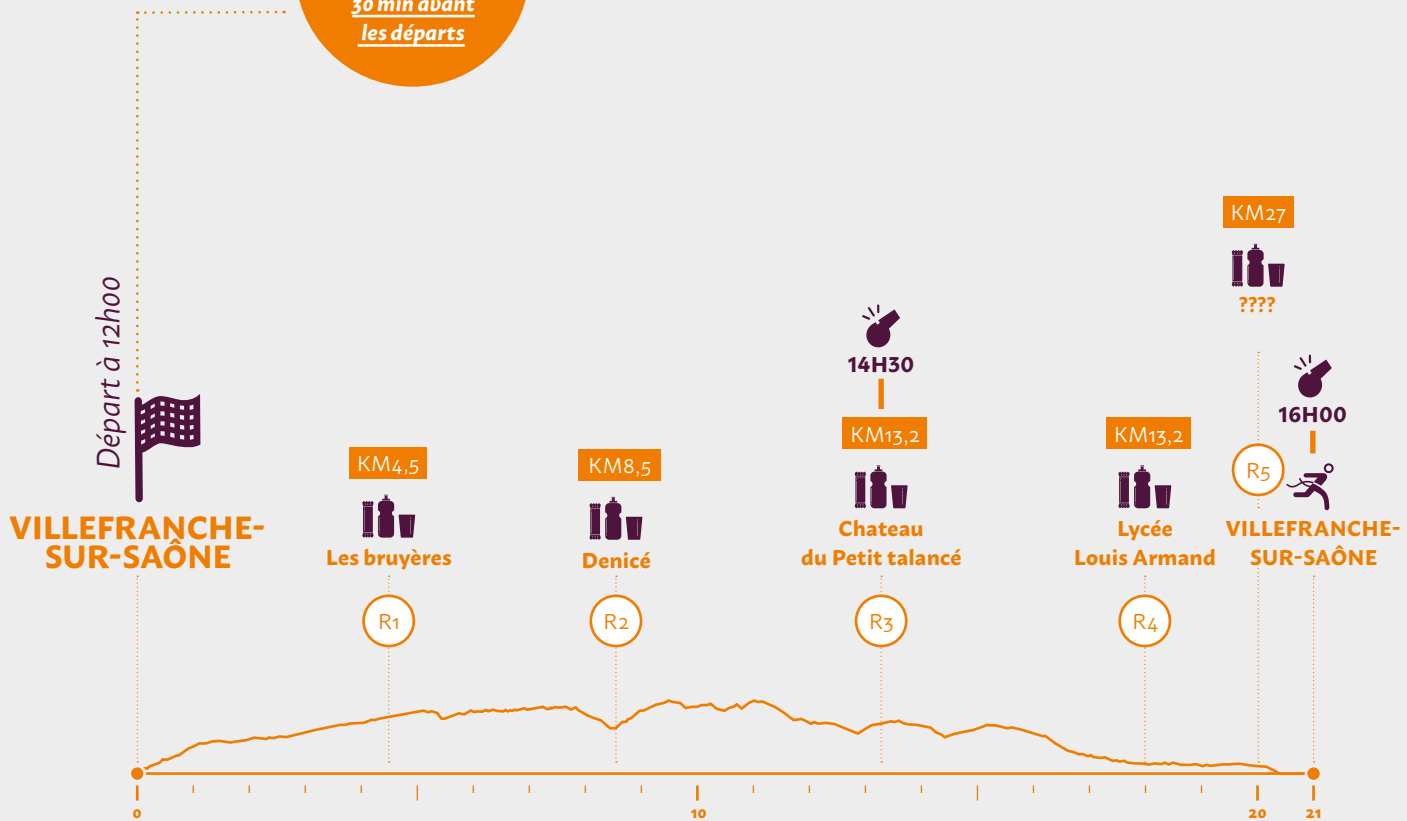


- **A hilly course** in the middle of Beaujolais wines.
- **A challenge both sportive and festive** with many activities and tasting all along the way.
- **A loop route** on road.
- **14 tastings** including 4 refreshments sportive et festive.

- Half-marathon
- R1 Refreshment
- 🎵 Animation
- 🍷 Wine tasting and/or snack
- 🏰 Castle
- Villages crossed
- 🚻 Toilets
- 🏥 First aid station

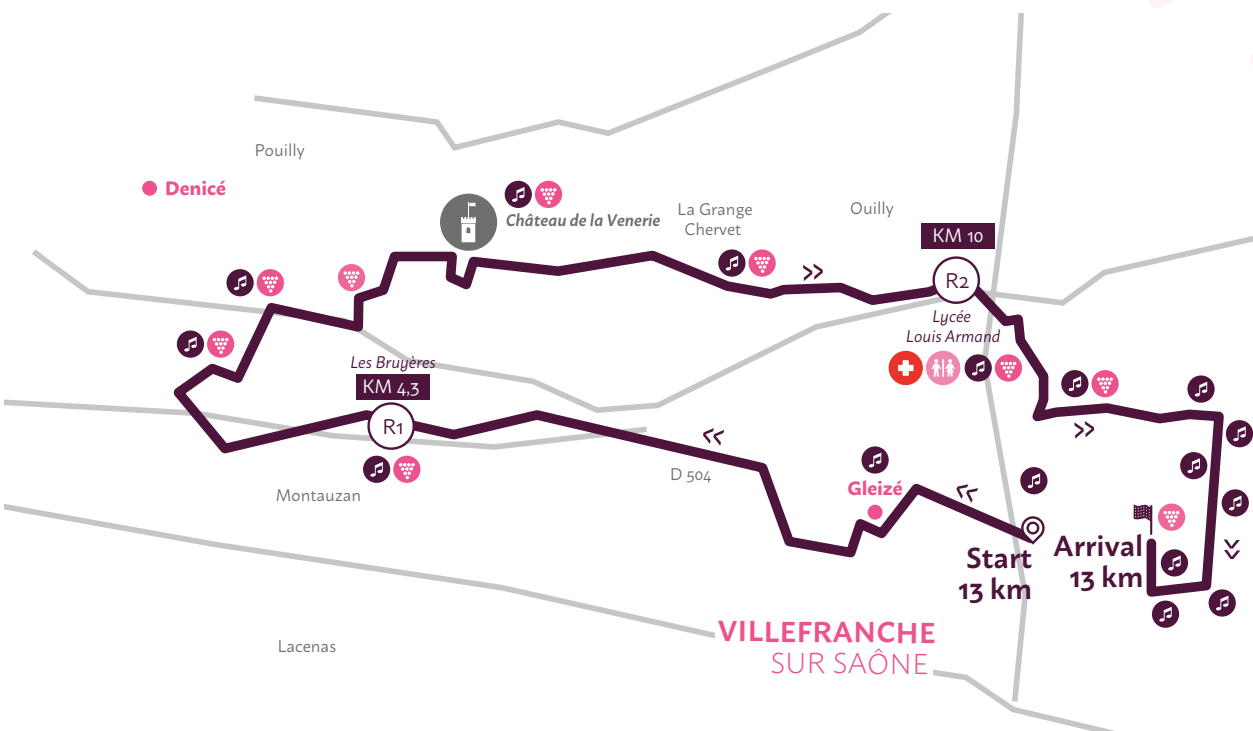


SAS!
 Entrée dans les SAS
 30 min avant
 les départs



- Marquage kilométrique : blanc / Fléchage au sol de couleur rose fluo
- Respecter le code de la route : les routes sont ouvertes à la circulation
- Ravitaillement tous les 5 Km (solide et liquide) et dégustations œnologiques (à consommer avec modération, interdites aux mineurs)
- 🚧 Barrières horaires 🏠 Ravito

The 13 km du Rhône



- **A festive race by excellence** with an incursion into the heart of Beaujolais.
- **A slightly hilly course**, fun and festive with many disguised runners.
- **A loop route** on road.
- **2 refreshments** and many activities.

- 13 km du Rhône
- Refreshment
- Animation
- Wine tasting and/or snack
- Castle
- Villages crossed
- Toilets
- First aid station



SAS!
Entrée dans les SAS
30 min avant
les départs

Départ à 14h30

VILLEFRANCHE-SUR-SAÔNE



KM5
Les bruyères

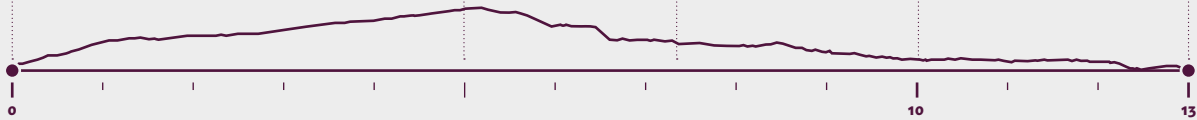
R1

15H45
KM7,3
Chateau de la Venerie

KM10
Lycée Louis Armand

R2

16H40
VILLEFRANCHE-SUR-SAÔNE



- Marquage kilométrique : orange / Fléchage au sol de couleur rose fluo
- Respecter le code de la route : les routes sont ouvertes à la circulation
- 2 ravitaillements – KM 5 et 10 (solide et liquide) et dégustations œnologiques (à consommer avec modération, interdites aux mineurs)
- Barrières horaires Ravito

La family marathon

2,5 ou 5 km festifs
non chronométré

Tous les porteurs d'un dossard
semi-marathon ou 13 km du
Rhône peuvent accompagner
gratuitement leurs enfants sur la
Family Marathon.



THIS EVENT IS ABOVE ALL FESTIVE, OPEN TO ALL OF THEM, EVEN THE MOST SMALLER. THERE IS NO TIME, YOU DON'T HAVE CERTIFICATE REQUIREMENT MEDICAL FOR YOUR REGISTRATION.

The start will be done at 10 am, the appointment at 9:30 am on the starting line (in front of the entrance of the Town Hall) for the warm-up!

The race : a 2,5Km loop in the heart of Villefranche sur Saône, the runners will be able to perform 1 or 2 loop according to their desires. As for others events of Marathon International du Beaujolais ©, the Family Marathon participants are invited to come with their most beautiful costumes!

A « So-Fun » entertainment village will be accessible to registered after the line with many surprises.

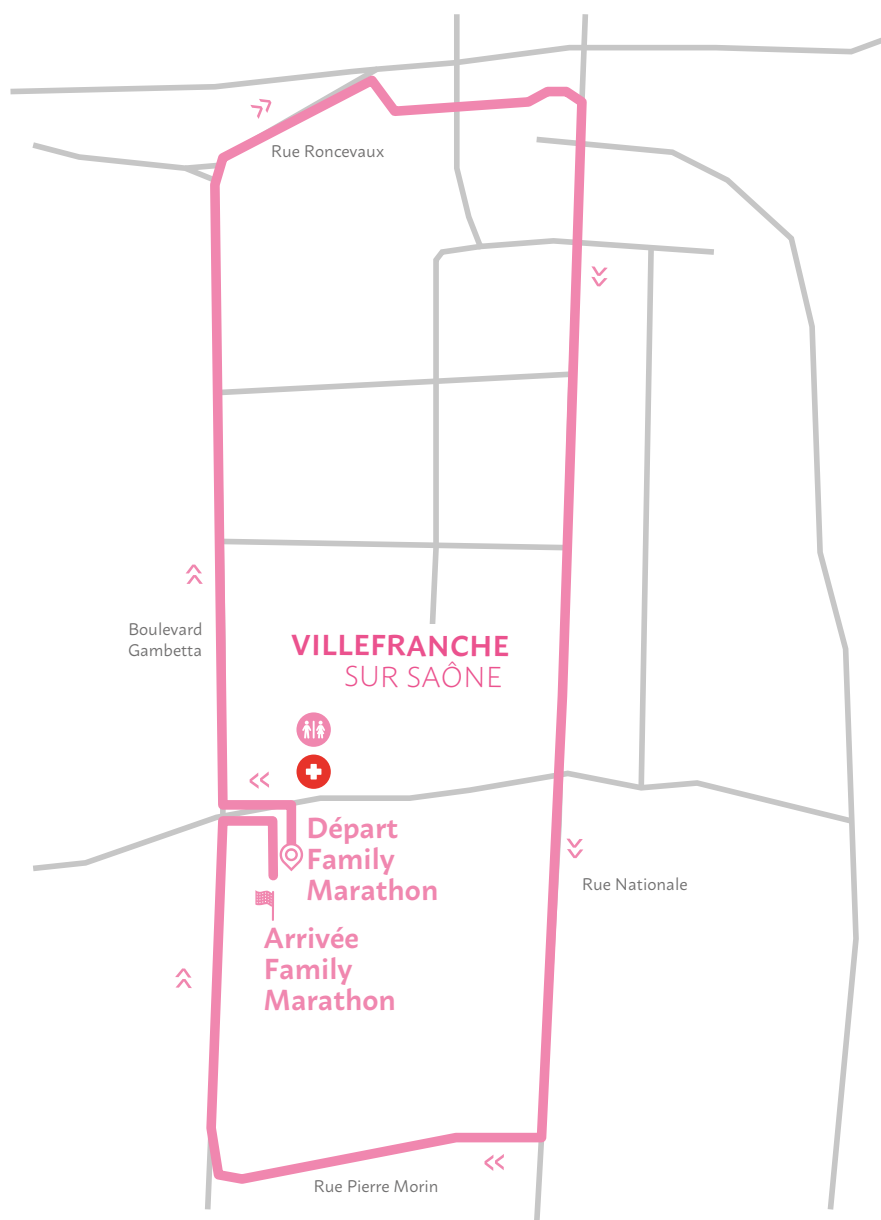
Warm-up, entertainments, costumes, make-up workshop, confettis...



Start at 10 am in Villefranche



TIME RESTRICTIONS: FROM 10AM TO 11AM



— Boucle de 2,5 km

Toilettes

Poste de Secours





Family
MARATHON
31129



Les partenaires du Marathon du Beaujolais

PARTENAIRES INSTITUTIONNELS



PARTENAIRES PREMIUM



PARTENAIRES OFFICIELS



PARTENAIRES VILLAGE



PARTENAIRES MÉDIAS



FAMILY MARATHON



SUPPORTERS

Tondeur Optique / Crédit Agricole / Sport Center / Douzaleur / Cryosanté Calades / Glacever / Snef / Ucar / Grill Courtepaillaie / École Isostee / Le Jardin des Fleurs / Vincent Façades / Martin Emballage / Hôtel-Restaurant Le Saint Romain / Établissement scolaire Mongrè / Salon de coiffure Philippe / Le Château de La Brasse / Celerys conseil / havas Voyages / Utiade / Cristaline





MARATHON
INTERNATIONAL
du Beaujolais

